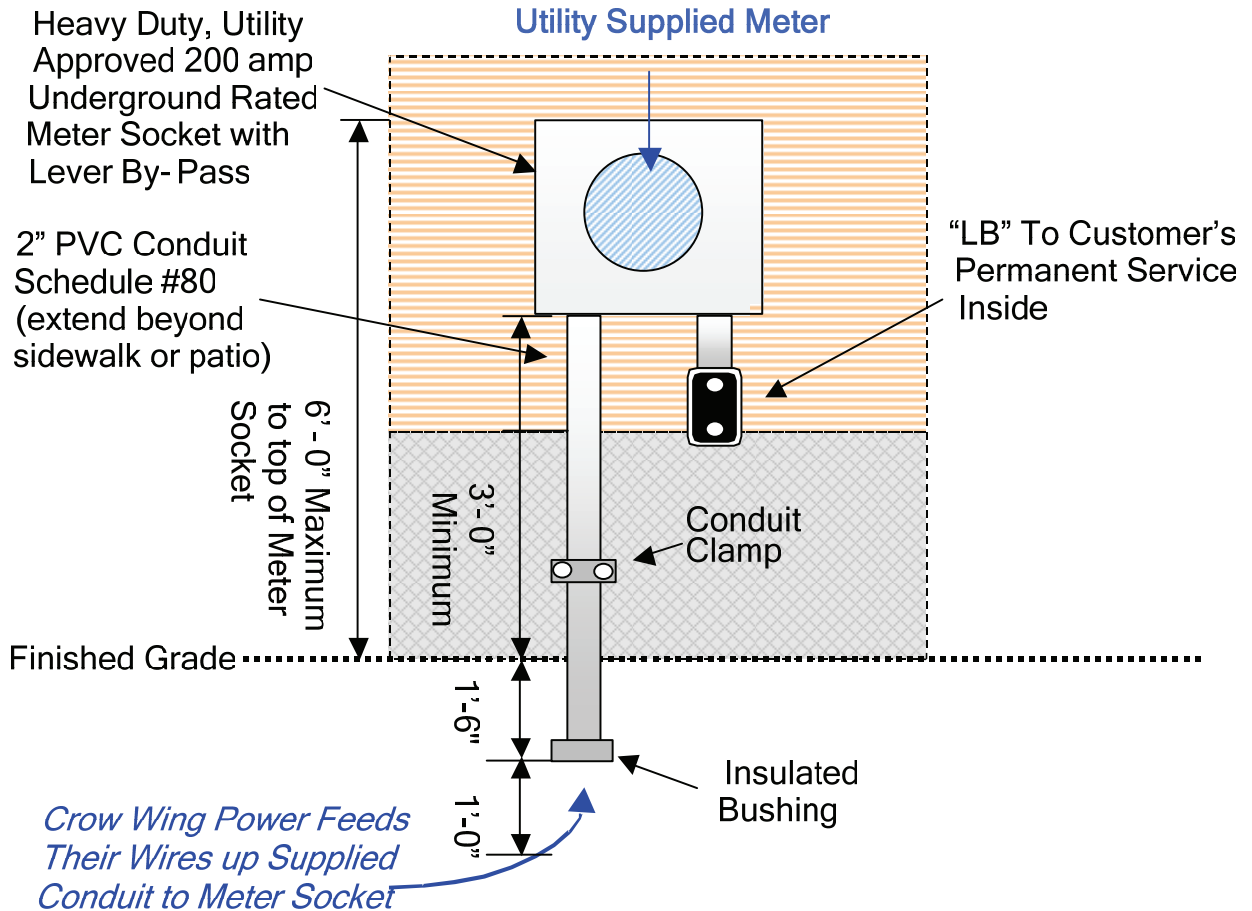




CUSTOMER SUPPLIED WALL MOUNTED UNDERGROUND METER ASSEMBLY, RESIDENTIAL, 200 AMP RATED



GROUNDING TO THE ELECTRIC SERVICE PANEL

For *new* construction, grounding is by a concrete encased electrode. This is:

- At least 20' of #4 AWG bare copper conductor in the concrete footing
- #4 AWG bare copper conductor suitably bonded to the reinforcing steel in the concrete
- #4 AWG bare copper conductor bonded to 20' of reinforcing rod stubbed through foundation

For *existing* structures, an external 8' ground rod may be allowed

Notes:

All meter assemblies must be approved by the Minnesota State Board of Electricity prior to energizing by Crow Wing Power.

Hardware to be rust resistant.

TYPICAL APPLICATIONS

Underground Service to Meter On Wall

