

# CURRENT CONNECTION

CROW WING POWER NEWS · NOVEMBER 2019 · VOLUME 71, NUMBER 7

A Touchstone Energy® Cooperative   
The power of human connections

## It's Time for an Energy Analysis of Your Home >>>

### Do it Yourself Home Energy Assessment

As we approach winter, now's a good time to conduct an energy analysis of your home. If you're a do-it-yourselfer, go to TogetherWeSave.com where you can go to a DIY online energy area called H.E.A.T. (Home Efficiency Analysis Tool)



You start the online adventure by entering your zip code and your Cooperative provider.

It will take you through areas of your home like checking your attic, living space, basement and systems. Click your areas of concern within those categories and the program teaches you best practices and shows you the cost benefit of each area of upgrade.

The program gets pretty detailed and tells you options for attic insulation and how much and what products you should use.

Under "Basement", the site offers eight areas of concern to check like your HVAC system, insulating the ceiling, air ducts, and caring for your water heater.

### Crow Wing Power Energy Assessments

We also have Energy Consultants in the office that members can call and arrange an appointment with. They will go to your home and do a complete walk thru of your home and grounds. They can check your electric panel, heating system, air exchanger, plumbing areas, appliance types and they also have an infrared camera that checks for insulation issues. They know in general how much your energy bill should be with what you have in your home and can detect perhaps one or more culprits that are causing higher than average energy bills.

On average the consultants visit approximately 50 homes each year.

INSIDE

A Word From Your CEO .....	2
Electric Heat Tax Exemption .....	3
People's Security .....	3
Holiday Open House .....	4



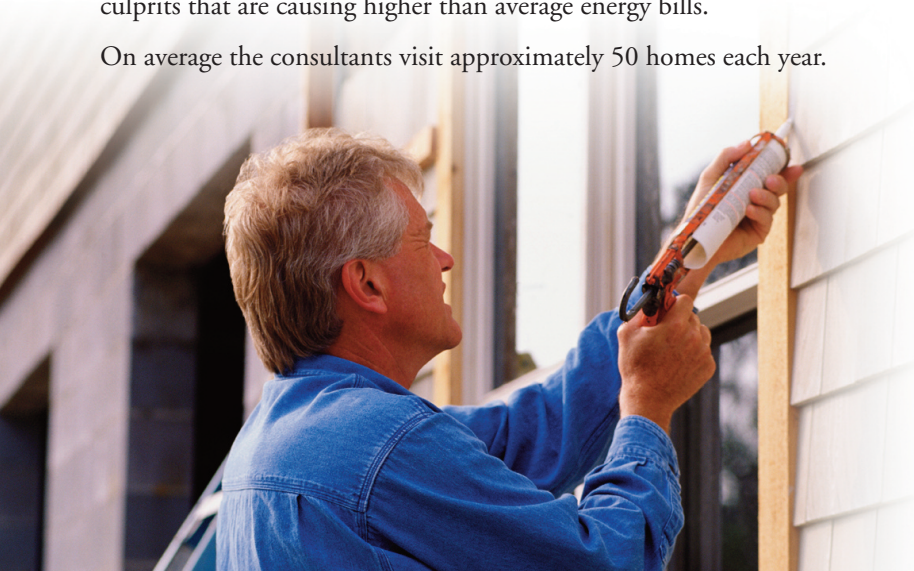
### HOMEOWNERS FALL CHECK LIST

#### Exterior:

- Cover septic with straw, leaves or blankets to prevent freezing;
- Disconnect hoses from faucets;
- Cover air conditioner units;
- Clean air exchanger vents, gutters and dryer vent;
- Overhang venting should be clear of dust, cobwebs, etc. to aid in attic venting.

#### Interior:

- Change furnace filter;
- Clean and wash air exchanger filters;
- Check windows for sealing and locks;
- Test smoke and CO2 detectors and change batteries if needed;
- Cover drafty windows with plastic;
- Unplug any items not being used (TV, electronics);
- If seasonal shut down is desired, turn off main electrical breaker to insure total shutdown and drain all plumbing.



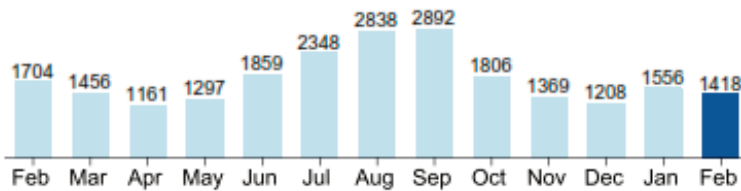


# A WORD FROM YOUR CEO

## Electric Bills Will Be Simplified/New Look in 2020 >>>

Next spring, we plan on changing the look of your electric bill and simplifying it to better serve you. You'll note several changes for the new year including:

- A new graph that shows month by month kilowatt hour use, so you can compare this year's monthly use with last year's use. You'll be able to gauge how you are doing compared to the previous year.



COMPARISONS	Days	Total kWh	Avg. kWh	Daily Cost
<b>CURRENT BILLING</b>	30	1,418	47	\$4.96
<b>PREVIOUS BILLING</b>	32	1,556	49	\$5.01
<b>LAST YEAR BILLING</b>	31	1,704	55	\$5.62

- In January, we will be rolling the Wholesale Power Cost Adjustment (PCA) into the wholesale rate. For many years we've had the PCA line on your electric bills. In years past that line item was placed there to reflect the ups and downs of the cost of wholesale power we purchase from our Generation and Transmission Utilities. That PCA has remained fairly steady at about .04000 cents/kwh (with the exception of summer high demand months) so we are simply rolling it into the wholesale rate for purchased power. For most months we anticipate you will see the PCA at 0.00000 cents/kwh. Summer months may vary.

What does that mean?

The amount of your bill will remain the same, just the PCA line item will change. (see the 2019 bill example and the 2020 sample)

I'll keep you informed,

Bruce L. Kraemer, CEO

### 2019 Bill

Electric Service Detail		ACCOUNT: 01234 Page 2 of 2			
RATE	METER	SERVICE READ DATES		MULT	kWh
10 GEN SERV	002360	04/15/19	05/15/19	1.00	543
Generation & Transmission (wholesale power costs)		Other Charges:			
Rate: <u>G&amp;T Charges</u>	543 KWH X 0.04047	21.98	COUNTY TAX	0.42	
			ROUNDUP AMT	0.67	
			STATE TAX	5.72	
Wholesale Power Cost Adjustment	10 543 KWH X 0.04000	21.72	Previous Statement	112.00	
			Payment - Thank You!	-112.00	
			Current Charges	90.00	
Distribution (cooperative delivery costs)		Total Due For Electric Service			
BASIC CHARGE	24.00	90.00			
Rate: <u>Distribution Charges</u>	10 543 KWH X 0.02853	15.49			

### 2020 Bill

Electric Service Detail		ACCOUNT: 01234 Page 2 of 2			
RATE	METER	SERVICE READ DATES		MULT	kWh
10 GEN SERV	002360	04/15/19	05/15/19	1.00	543
Generation & Transmission (wholesale power costs)		Other Charges:			
Rate: <u>G&amp;T Charges</u>	543 KWH X 0.08047	43.70	COUNTY TAX	0.42	
			ROUNDUP AMT	0.67	
			STATE TAX	5.72	
Wholesale Power Cost Adjustment	10 543 KWH X 0.00000	0.00	Previous Statement	112.00	
			Payment - Thank You!	-112.00	
			Current Charges	90.00	
Distribution (cooperative delivery costs)		Total Due For Electric Service			
BASIC CHARGE	24.00	90.00			
Rate: <u>Distribution Charges</u>	10 543 KWH X 0.02853	15.49			

## Board Meeting Highlights

Crow Wing Power's Board of Directors conducted its regular monthly meeting Thursday, September 19, 2019. A quorum of directors was present. Chair Bob Kangas opened the meeting with the Pledge of Allegiance to the United States of America. The following reports were given:

- Human Resource Administrator Deb Frank presented a Human Resources update.
- Presentation on RUS Loan Fund and Accounting Review Process.
- Presentation on US House File 733.
- CEO Bruce Kraemer provided a CEO report.
- Treasurer LuAnn Nelson provided the Finance Committee Report.
- Directors and CEO shared highlights of meetings attended on behalf of the cooperative.

The following actions were taken:

The Board approved

- September Consent Agenda.
- Minutes of the August 15, 2019 regular board meeting.
- Basin Electric 2020 Load Forecast.
- Modification to the Cooperative's billing statement.
- Member request for membership list.
- Member request for Form 990's.
- Director expense reports for August 2019.
- Upcoming director meetings.

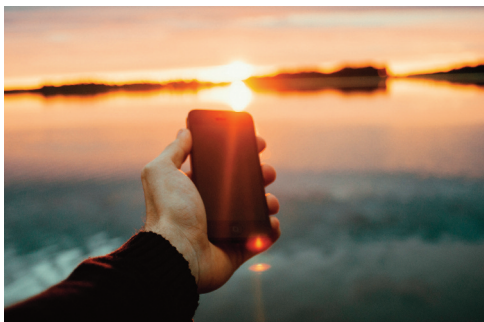
Board meeting highlights are also published on our website at [cwpower.com/board-and-meetings](http://cwpower.com/board-and-meetings). Members can review detailed minutes by logging into their SmartHub account.

September minutes will be published after approval in October. The next board meeting is November 21 at 9:30 a.m.

## Security Systems – Telephone Lines and Sunsets >>>

Today the two most popular ways that most security systems communicate with the outside world are landline telephone service and cellular communicators.

Technology continues to advance and many consumers are either switching their landline telephone service to VoIP internet-based service or dropping landline service altogether. Security systems do require some sort of communication



pathway in order to communicate with the response center who in turn alerts you to any issues with your security system. So, before you consider switching your telephone service provider or

dropping it completely, please give People's Security Company a call. They are happy to help you become an informed consumer and make the best decision for your family and your security system.

As with all technology, upgrades are inevitable. Consumers with security systems using cellular communication need to be aware that AT&T and Verizon have announced the sunset of 3G and 4G networks. What does this mean for consumers across the United States? It means that in the next 18 -24 months security system cellular radios using 3G and 4G technology will need to be upgraded. The other issue is that AT&T and

Verizon are already “dialing back” the signal availability for 3G and 4G in certain areas. If you have recently started to experience an increase in failed communication with your security system this may be part of the reason for the problems. People's Security Company is encouraging all consumers to reach out to their security company and consider upgrading sooner rather than later as there may become a shortage of radios across the industry. The deadlines are starting as early as first quarter 2020 and vary depending on the cellular provider.



Many consumers do realize long-term savings when they switch to cellular communication for their security systems and are able to take advantage of the enhanced features available such as remote access, cameras and automation.

Visit People's Security Company online at [PeoplesSecurity.com/nov2019cwp](http://PeoplesSecurity.com/nov2019cwp) or call 1-800-735-1440.



## Notice of Tax Exemption for Electric Heat >>>

Sign up to receive a six-month electric heat tax exemption if you meet the following requirements: you have a single electric meter; your primary heat is electric; you have not previously signed the exemption form before; and you do not have a dual fuel or off-peak meter.\*

Minnesota law provides for the exemption of sales tax on residential electric heat. To qualify, you must be able to declare that 50% of your primary residential/commercial heat is electrical.

If you meet that requirement and comply with the other items on the check-list, you may sign an exemption form and avoid the tax for the months of November through April. Those who have previously signed the form and people who have dual fuel or off-peak meters are already receiving the exemption.

Cut along dotted line and mail to the address below. 

### Sales of Tax Exemption for Electric Heat

**Return to:** Crow Wing Power, PO Box 507, Brainerd, MN 56401 – Attn: Billing [Commercial accounts must use an ST3 form]

Name: \_\_\_\_\_ Account #: \_\_\_\_\_

Address: \_\_\_\_\_ City: \_\_\_\_\_ State: \_\_\_\_\_ Zip Code: \_\_\_\_\_

Phone: (     ) \_\_\_\_\_

I declare that my primary source (50% or more) of residential heat is electrical. Therefore, I will be eligible for exemption of the Minnesota State Sales Tax for the electrical bills dated November, December, January, February, March and April. \* If you have off-peak heat or a dual fuel meter, OR if you have previously signed an exemption form, you need not return this.

Signature \_\_\_\_\_ Date: \_\_\_\_\_



# Join us for our Holiday Open House December 9 – 13 Coffee and donuts

We're a toys for kids drop location – bring an unwrapped toy if you like. In 2018, gifts were provided for 1,050 children (460 families).

**Go paperless with newsletters. Go to [info@cwpower.com](mailto:info@cwpower.com) to let us know!**

## CURRENT CONNECTION

A Touchstone Energy® Cooperative   
The power of human connections

(ISSN 1068-1949)  
USPS 456-180

Published monthly by  
Crow Wing Power,  
17330 State Hwy. 371  
Brainerd, MN 56401.  
218-829-2827  
800-648-9401  
[www.cwpower.com](http://www.cwpower.com)

### Editor: Char Kinzer

Periodic postage paid at  
Brainerd, MN (Postmaster):  
Send change of address form 3579 to:  
Current Connection, Crow Wing Power,  
P.O. Box 507, Brainerd, MN 56401.

Annual Subscription Rates:  
Members - \$3.00  
Non-Members - \$3.50

Board meetings are held the third Thursday of each month beginning at 9:30 a.m. Members wanting to attend the Board meetings need to fill out a request form three business days prior to meeting. The form can be found at [cwpower.com/board-and-meetings](http://cwpower.com/board-and-meetings).

### Directors. Here to Help!

Following is a list of directors and their telephone numbers:

- Bob Kangas .....218-587-4453
- Paul Koering.....218-851-9954
- Ric Larson .....218-546-5781
- Gordon Martin.....218-746-3971
- Bryan McCulloch.....218-820-9708
- Doris Mezzenga .....218-692-1004
- LuAnn Nelson .....612-400-4627
- Gert Roggenkamp .....218-562-4566
- Dwight Thiesse.....218-831-8605

## Statement of Ownership Management and Circulation >>>

**UNITED STATES POSTAL SERVICE® (All Periodicals Publications Except Requester Publications)**

1. Publication Title: **Current Connection**

2. Publication Number: **10681949**

3. Filing Date: **10/1/2019**

4. Issue Frequency: **Monthly**

5. Number of Issues Published Annually: **12**

6. Annual Subscription Price: **\$3.00**

7. Complete Mailing Address of Known Office of Publication (Not printer) (Street, city, county, state, and ZIP+4®):  
**Crow Wing Cooperative Power & Light Co., 17330 State Hwy 371 N, Brainerd, MN 56401**

8. Complete Mailing Address of Headquarters or General Business Office of Publisher (Not printer):  
**Crow Wing Cooperative Power & Light Co., PO Box 507, 17330 State Hwy 371 N, Brainerd, MN 56401-4832**

9. Full Names and Complete Mailing Addresses of Publisher, Editor, and Managing Editor (Do not leave blank):  
Publisher (Name and complete mailing address):  
**Crow Wing Cooperative Power and Light Co., PO Box 507, Brainerd, MN 56401**  
Editor (Name and complete mailing address):  
**Char Kinzer, PO Box 507, Brainerd, MN 56401**

10. Owner (Do not leave blank. If the publication is owned by a corporation, give the name and address of the corporation immediately followed by the names and addresses of all stockholders owning or holding 1 percent or more of the total amount of stock. If not owned by a corporation, give the name and address of the individual owner. If owned by a partnership or other unincorporated firm, give its name and address as well as those of each individual owner. If the publication is published by a nonprofit corporation, give its name and address.)  
Full Name: **Crow Wing Cooperative Power & Light Co.** Complete Mailing Address: **PO Box 507, Brainerd, MN 56401**

11. Known Bondholders, Mortgagees, and Other Security Holders Owning or Holding 1 Percent or More of Total Amount of Bonds, Mortgages, or Other Securities. If none, check box.  
Full Name: \_\_\_\_\_ Complete Mailing Address: \_\_\_\_\_

12. Tax Status (For completion by nonprofit organizations authorized to mail at nonprofit rates) (Check one)  
 Has Not Changed During Preceding 12 Months  
 Has Changed During Preceding 12 Months (Publisher must submit explanation of change with this statement)

13. Publication Title		14. Issue Date for Circulation Data Below	
CURRENT CONNECTION		10/02/2019	
15. Extent and Nature of Circulation		Average No. Copies Each Issue During Preceding 12 Months	No. Copies of Single Issue Published Nearest to Filing Date
a. Total Number of Copies (Net press run)		38,417	38,500
b. Paid Circulation (By Mail and Outside the Mail)			
(1) Mailed Outside-County Paid Subscriptions (Based on PS Form 3841 (Include paid distribution above nominal rate, advertiser's proof copies, and exchange copies))		37,625	37,588
(2) Mailed In-County Paid Subscriptions (Based on PS Form 3841 (Include paid distribution above nominal rate, advertiser's proof copies, and exchange copies))		0	0
(3) Paid Distribution Outside the Mails Including Sales Through Dealers and Carriers, Street Vendors, Counter Sales, and Other Paid Distribution Outside USPS®		0	0
(4) Paid Distribution by Other Classes of Mail Through the USPS (In §, First-Class Mail®)		0	0
c. Total Paid Distribution (Sum of 15b(1), (2), (3), and (4))		37,625	37,588
d. Free or Nominal Rate Distribution (Sum of 15c(1), (2), (3), and (4))			
(1) Free or Nominal Rate Outside-County Copies Included on PS Form 3841		0	0
(2) Free or Nominal Rate In-County Copies Included on PS Form 3841		0	0
(3) Free or Nominal Rate Copies Mailed at Other Classes Through the USPS (In §, First-Class Mail)		69	69
(4) Free or Nominal Rate Distribution Outside the Mail (Carriers or other means)		352	20
e. Total Free or Nominal Rate Distribution (Sum of 15d(1), (2), (3), and (4))		421	89
f. Total Distribution (Sum of 15c and 15d)		38,046	37,677
g. Copies not Distributed (See Instructions to Publishers #4 (page #3))		372	823
h. Total (Sum of 15f and g)		38,418	38,500
i. Printed and Mailed (15c divided by 15f times 100)		982	1002

16. Publication of Statement of Ownership:  
 If the publication is a general publication, publication of this statement is required. Will be printed in the **November**, 2019 issue of this publication.  Publication not required.

17. Signature and Title of Editor, Publisher, Business Manager, or Owner  
**Char Kinzer, Editor** Date: **10/1/19**

I certify that all information furnished on this form is true and complete. I understand that anyone who furnishes false or misleading information on this form or who omits material or information requested on the form may be subject to criminal sanctions (including fines and imprisonment) and/or civil sanctions (including civil penalties).

In order to communicate more effectively with members, we are changing our publication from a bimonthly newsletter to a monthly newsletter. However, it is our intent to publish the receipt every other month starting in October.