

CURRENT CONNECTION

Operation Round Up Supports Food Shelves >>>

Area food shelves play an important role of providing food essentials for people in the three-county region of cooperative members we serve electricity to.

The Crow Wing Power Community Trust Board oversees the **Operation Round Up donation program and recognizes the importance of supporting them. For that reason the Trust Board earmarked \$41,500 that will be distributed in March to thirteen area food shelves, so they can take advantage of *Second Harvest North Central Minnesota Food Share March matching campaign.

Area food shelves have changed dramatically over the years in that many in our region have been fortunate to receive grants for refrigeration, shelving and shopping carts to remodel so people can “self-shop” for foods that fit their family’s needs. Some have achieved SuperShelf certification (advanced self-shop). And, most receive rescued food from grocery stores so they can provide fresh produce and breads.

It’s clear that area food shelves are passionate and will go out of their way to help people with emergency needs and direct clients to other help beyond food.

Morrison County Food Shelf

The Morrison County Food Shelf serves 350 households, monthly. Last year the food shelf was given a grant from the University of Minnesota Extension to transform their food shelf into a certified SuperShelf.

The overall goal of SuperShelf certification is to help a food shelf become more friendly and client-centered as well as provide healthier options to encourage clients to shop and eat well. This project helped the food shelf by looking at their ordering practices and assisting them with making healthier purchases and potentially decrease their spending budget. Morrison gets their supplies from Second Harvest Heartland out of the Twin Cities.



>> Volunteers Clyde Gulden and Bonnie Vaughn

Motley Food Shelf

Motley Food Shelf served 741 household last year. Churches, the March Campaign, Individuals and Businesses help support the needs of the food shelf. According to Sherry Frisk, Director, they saw 37 new individuals who began using the shelf in November. Sherry thinks changes in SNAP (the state-funded food program) are causing more people to use the food shelf. Donations are always needed to purchase fresh fruits, vegetables and meats when not available through Second Harvest.

Pillager Area Food Shelf

The Pillager Area Food Shelf serves 464 individuals

monthly. Betty Doss, Executive Director of the Pillager Family Center said, “Families are able to self-shop, which is a new upgrade. People choose groceries that best fit their needs. Getting food to families who need it is one aspect of food shelves. The other is the community relationships that they form and a way to connect with caring people. The clients and the volunteers both benefit.”

Pillager’s shelf is uniquely connected to the Pillager Area Family Center, which provides a multitude of birth to senior human services programs as a liaison between Cass County and the Pillager School District.

Crosslake Food Shelf

The Crosslake Food Shelf served 1,193 households in 2019. It is in the process of upgrading to “choice” distribution, which will allow patrons to select their own foods. They’ve recently spent approximately \$6,000 on coolers, carts and lumber to enable the transition. They get most of their food from Second Harvest, but buy milk and food from Reed’s for items they can’t get elsewhere. Crosslake is seeing a trend toward increasing senior participation.

Pine River Food Shelf

The Pine River Area Food Shelf serves 161 households monthly. Last year Pine River Food Shelf received funding to become a SuperShelf, like Morrison County, the only two thus far in the three-county Crow Wing Power service area. Volunteers and staff are now receiving support and training to ensure the intent and values of the project are in the program. They added 87 new households, which was a remarkable increase, according to Leslie Bouchonville, Director of the Pine River Backus Family Center. Pine River is seeing an increase in younger families.



Pine River’s Food Shelf is part of the Family Center, much like Pillager’s organization, where patrons have access to a multitude of services.

INSIDE

A Word From Your CEO2
Annual Impact Grant Notice2
Food Shelf Cont.3
People’s Security4
Calendar Contest.....4



A WORD FROM YOUR CEO

Cooperatives, Helping Build Stronger Communities >>>

Founded as a way to bring electricity to rural communities, cooperatives have been a cornerstone of community and economic development in rural America.

Cooperatives across the globe adhere to the same Seven Cooperative Principles. 'Concern for Community' is the seventh principle, and it is one that Crow Wing Power values to be an integral part of our mission.

There are many ways we live up to that seventh principle. Operation Round Up, our charitable-giving program, is made possible through participating members who cooperatively round up their monthly electric bills and donate an average of 50¢, which when pooled, provides about \$200,000 annually for much needed human health and well-being programs. Four times a year in January, April, July and October our Community Trust board meets to distribute funds to area non-profits. As is reflected in this newsletter issue, area food shelves are important recipients. Veteran, youth, senior, respite and other programs depend on strong organizations like ours to collaborate with other Foundations. Operation Round Up's contributions have helped make the region's non-profit organizations stronger with total donations of \$3.7 million since 1996.

Making an impact by giving an organization an extra boost is the purpose of Crow Wing Power's annual Impact Grant. We believe that sometimes a great idea can really take off and lift the entire community if given the support. The Trust Board is currently soliciting applicants for that special grant through the end of March.

Crow Wing Power believes investing in our youth also makes a community stronger, that's why we are proud to be able to use returned unclaimed capital credit checks each year to provide scholarships to area students advancing their education in post secondary schools. We offer three ways of distributing scholarships within our communities that totaled over \$74, 000 just last year. This included providing scholarships for future electric cooperative lineworkers.

Electric cooperatives throughout the nation send over 1,500 high school students to a Washington Youth Tour, which builds a

community of awareness for teens interested in government.

In March we will be interviewing six youth who've applied and three of those High School Juniors will be able to attend an all-expenses paid trip to Washington D.C. where they'll meet their U.S. Representatives and Senators and learn about their government and our country's history.

Crow Wing Power believes we have an obligation to be part of helping to support businesses create jobs and thrive by utilizing special rural electric economic development loan and grant programs we can access as a cooperative. We can't sell electricity to a business that has closed its doors, or to people that have moved because there are not enough local opportunities.

Electricity is a critical need and our number one priority, but it takes more than poles, wires and kilowatt-hours to make a community.

As always, we welcome input from our member/owners. I'll keep you informed,

Bruce L. Kraemer, CEO

Board Meeting Highlights

Crow Wing Power's Board of Directors conducted its regular monthly meeting Thursday, January 16, 2020. A quorum of directors was present. Chair Bob Kangas opened the meeting with the Pledge of Allegiance. The following reports were given:

- CEO report.
- Finance Committee Report.
- Directors and CEO shared highlights of meetings attended on behalf of the cooperative.

The following actions were taken:

The Board approved

- December Consent Agenda.
- Minutes of the December 19, 2019 regular board meeting.
- Resolution to Amend Revenue Deferral Plan.
- Revisions to Board Policy No. 335
- Director expense reports for December 2019.
- Upcoming director meetings.

Members can review detailed minutes by logging into their SmartHub account. Log in is located on the homepage of our website.

Highlights are also published on our website at cwpower.com/board-and-meetings. Members can review detailed minutes by logging into their SmartHub account. Log in is located on the homepage of our website. February minutes will be published after approval in March. The next board meeting is March 19, 2020.

Annual Impact Grant Notice >>>

Crow Wing Power Community Trust (Operation Round-Up) is offering an Impact Grant of up to \$12,000. The purpose of the Impact Grant will be to give a boost to a unique project/program, organization or community to insure its success.

Applicants must show that this one time grant would have a major impact for their project, organization or community. The organization needs to show that they have a history of success, or if a start-up project, the business plan must be strong and show large community support. Projects that focus on human health and well-being will be given additional consideration.

To qualify for an application, contact Char Kinzer 218-829-2827 or 1-800-648-9401. Applications must be submitted by March 31, 2020.

"Alone, we can do so little; together, we can do so much" – Helen Keller

Longville Area Food Shelf

Last year the Longville Area Food Shelf served 1,352 households. They are “self-shop”, where people select a 7-10 day supply of food. The vast majority of food is purchased from Second Harvest, but donations from the community are readily used. They have a strong volunteer base mainly from four area churches.

They are unique in that they are associated with Tossed and Found Boutique, which is a subsidiary program (thrift store) that covers overhead expenses of the food shelf, but not the food purchases.

Hackensack Food Shelf

The Hackensack Food Shelf serves 653 households and is associated with the Share-N-Care Thrift Shop in downtown Hackensack. The partnership allows for multiple volunteer sharing opportunities and helps take care of overhead expenses for the food shelf. They too get most of their food from Second Harvest and appreciate the donations from Crow Wing Power’s Round Up program.



>> Laurie Dahl and Cheri Westphal

Emily’s Food Shelf

According to Nancy Moritz, director, “Our super shelf does well for our families. Our Emily Food Shelf serves Emily, Outing, Fifty Lakes, and townships of Little Pine, Fairfields, Perry Lakes and Ross Lake. Emily Food Shelf is provided to 499 households with 382 children, 561 adults and 341 seniors. The pounds of our groceries for the year of 53,852 pounds. Fruits, vegetables and meats are available. Donations come from the Second Harvest and others. Our hearty volunteers work with us. Thank you from the Crow Wing Power Round Up Program.”

Cuyuna Range Food Shelf

The Cuyuna Range Food Shelf, based in Crosby, serves 150 families each month. On the second and third Wednesdays from 7:00 to 9:30 in the morning, the food shelf building is hustling and bustling with volunteers packing boxes of food for area residents to pick up. Sometimes they have apples, oranges or other fresh produce. Occasionally they will receive extra food, bread or pastry from Costco and Target and there’s normally frozen meat to add to the mix. Susan Zgutowicz, shelf president, said they boast 30 active volunteers, which really helps.

Pierz Area Food Shelf

Pierz Area Food Shelf serves an average 60 families per month. They are currently in a very small building behind the Pierz Fire Department.

Pat Zimmermann Director said, “We’re in the process of moving to a larger location, because we’re outgrowing our space. And we get a lot of really good produce, eggs and milk now that we didn’t get before, so, now we’re going to need more coolers. Pierz is a very generous town. We have great support from everyone and we have 20 to 25 volunteers, so it’s a really good program.”

Lakes Area Food Shelf

The Lakes Area Food Shelf, a Nisswa/Pequot Lakes food shelf serves 153 households monthly. According to Angie Rardin, Lakes Area Food Shelf Director, “Volunteers are out lifeblood. We could not continue our services without the people who give of their time to go client shopping, stock shelves, provide maintenance and pickup food.” They are self-shop like many.

Salvation Army Food Shelf

The Salvation Army Food Shelf serves between 800 to 900 individuals a month and about 300 brown bags per month for the homeless from Brainerd, Baxter, Fort Ripley and Merrifield and occasionally served people from other surrounding communities when the need arrives. They serve the needs of the largest number of people in the three-county region.



>> Linda Loftis, Coordinator

The shelf was one of the first in the region to become self-shop. They are also unique in that they have an area where people can just drop in one time a day and pick up bread or a limited one or two items just to feed someone for the day.

The food shelf is associated with all the human services programs the Salvation Army provides, which is an advantage, like Pillager and Pine River have.

CLC Food Pantry



>> CLC Food Pantry

According to Erich Heppner, Director of Student Life at Central Lakes College (CLC) Food Pantry, “Our food pantry is unique in that it only serves college students. We routinely get 400 student users a week and we are a food choice model, which means that students get to choose which food items they take. I also think we are unique in the way that

food-insecure students are coming to us on empty stomachs, and they need some energy before class or a big exam.”

The College Pantry recently received food insecurity survey results revealed that approximately 41% of survey respondents at Central Lakes College Brainerd experienced low or very low levels of food security.



>> CLC Students

*Second Harvest North Central Food Bank, a 501(c) (3) non-profit organization, serves over 100 hunger relief agencies in Aitkin, Cass, Crow Wing, Itasca, Koochiching, Kanabec and Mille Lacs counties in North Central Minnesota. They are located in Grand Rapids and administer several programs that distribute over 4 million pounds of donated and purchased food and grocery products directly to individuals and through agencies that serve the needy.

**Operation Round Up is made possible by Crow Wing Power Members who allow their electric bills to be rounded up to the nearest whole dollar (an average of 50¢ a month), which when pooled together creates an approximate \$200,000 annually for charitable distribution. Crow Wing Power members make up a nine-member Board, who make the distributions.

You've Got Mail! >>>

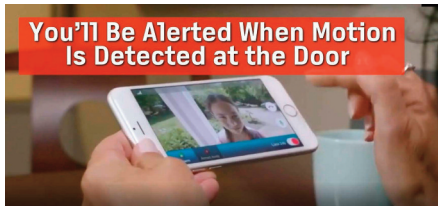


People's Security Company has sent out their first wave of notification letters to security system owners affected by the 3G network Sunset. As we shared in the November 2019 Current Connection, AT&T and Verizon are discontinuing support of the 3G networks. This means that any security system across the United States with cellular radios using the 3G technology will need to be upgraded.

You are encouraged to get your radio upgrade appointment scheduled as soon as possible to ensure your security system stays actively monitored for the safety and security of your property and family.

You've Got Pictures!

Technology continues to evolve and provide some very cost effective options for home and business owners. Keep an eye on your little slice of paradise up north, home and/or business to ensure your investments are protected and secure. And, if the unfortunate happens, you would have pictures for the authorities to use.



There are a variety of devices and price points available; from professionally installed camera systems to DIY door bells, and flood light cameras. Camera technology is worth exploring!

People's Security Company has been in business for 32 years, protecting homes, families and businesses just like yours. They specialize in safety, security, camera systems and smart home/business technology.

Visit People's Security Company online at PeoplesSecurity.com/mar2020cwp or call 1-800-735-1440



CURRENT CONNECTION

A Touchstone Energy® Cooperative 
The power of human connections

Published monthly by
Crow Wing Power,
17330 State Hwy. 371
Brainerd, MN 56401.
218-829-2827
800-648-9401
www.cwpower.com

Editor: Char Kinzer

Board meetings are held the third Thursday of each month beginning at 9:30 a.m. Members wanting to attend the Board meetings need to call or contact us three business days prior to the scheduled board meetings. If members want to present something, they need to fill out a request form found at www.cwpower.com/board-and-meetings with that three business days time frame.

Directors. Here to Help!

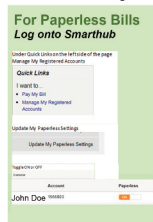
Following is a list of directors and their telephone numbers:

- Bob Kangas218-587-4453
- Paul Koering.....218-851-9954
- Ric Larson218-546-5781
- Gordon Martin.....218-746-3971
- Bryan McCulloch.....218-820-9708
- Doris Mezzenga218-692-1004
- LuAnn Nelson612-400-4627
- Gert Roggenkamp218-562-4566
- Dwight Thiesse.....218-831-8605

Food Shelf Hours

Location	Hours
Central Lakes College Food Pantry	Monday – Friday 8am-8pm
Crosslake	1 st & 3 rd Friday's 9am-1pm
Cuyuna	2 nd & 3 rd Wednesday's 7:00-9:30am
Emily	3 rd Wednesday's 9:30-11am 3 rd Thursday's 5:30-6:30pm
Hackensack	2 nd & 4 th Monday's 5-7pm
Longville	Every Wednesday 11am-3pm
Morrison County	Tuesday's & Wednesday's 10am-12pm Thursday's 6-8pm
Motley	Thursday's 9am-12pm Last Thursday of Month 6-8pm
Nisswa	Tuesday's & Thursday's 9am-12pm
Pierz	Monday's 9-11am & 5-7pm
Pillager	Thursday's 11am-4pm
Pine River	Tuesday & Friday 10am-1pm 2 nd Tuesday's 3:30-6pm
Salvation Army	Tuesday – Friday 9:30am-12pm by appointment 1-3:30pm – walk ins

Go Paperless with Bills and Newsletters!



If we all pitch in and work together, Think What a Difference We Can Make

For Mobile Devices Settings-Paperless Bill-Toggle ON or OFF



Co-op Calendar Contest

Once again we are doing a calendar contest. To enter the contest, please submit your scenic photos of Minnesota to us. If your photo is chosen for the 2021 calendar, you will receive a \$25 electric bill credit. We will have a spiral bound calendar produced and available in early December.

Guidelines for the contest:

- Only Crow Wing Power members may enter the contest. (CWP employees and their immediate families are not eligible to enter the contest.)
- Send your photos electronically. Photos must be scenic capturing the beauty of Minnesota's four seasons. Photos must not include people.
- One membership (household) may submit up to 5 photos.
- Only landscape orientation photos will be accepted. Need to be sized for printing 12 inches wide by 9 inches high. 300 dpi minimum quality.
- To submit photos, go to www.cwpower.com, go to News/Events, click on Photo Contest and fill out the entire form including the photo. Deadline for submission(s) is October 1, 2020. To see last year's samples, go to our website.