

CURRENT CONNECTION

Burlington Recovery Homes Awarded Impact Grant >>>

The Crow Wing Power Community Trust Board listened, learned, and then overwhelmingly approved Burlington Recovery Homes (BRH) as the 2021 \$12,000 impact grant recipient at their July Operation Round-Up® meeting. Each year the Community Trust Board issues one impact grant to an organization for up to \$12,000.

Sheila Haverkamp, along with residents and other family members, presented their organization, Burlington Recovery Homes, to the board sharing with them facts, personal stories, how, and why their organization came about. It was obvious that this organization's impact on residents created a ripple effect on people, in families, businesses and communities.

The Burlington Recovery Homes are organized sober houses in the central Minnesota area and have been working in the community for five years. These homes are purchased and renovated to provide housing where men can live while pursuing and maintaining recovery from drug and alcohol addiction. The Haverkamp's purchased their first home in 2016 and remodeled it to accommodate eleven men. With the success of residents and continued need, the couple, along with their son Joe Wasnie, have since purchased and remodeled additional homes, three residing in Brainerd and one in Little Falls.

Sheila retired as the executive director of Brainerd Lakes Area Economic Development in January 2020. Sheila and family members now work to maintain the homes and support current and past residents. With the purchase of the fourth recovery home, funds were needed to provide home furnishings which brought them to the impact grant application.

By being selected as the recipient of the 2021 impact grant, they will have the capacity to accommodate forty-eight men by late summer.

Men come to the BRH or get referred after graduating from an addiction treatment facility, jail, or homelessness. The company has built relationships and connections with organizations like Crow Wing and Morrison County Community Services, County Probation officers, law enforcement, and treatment facilities. These partners provided letters of support and are grateful to BRH for providing this service to help addicts and alcoholics on a road to recovery.

Sheila shared success stories from current and past residents – where men have returned to their families, regained custody of a child, and some getting their own apartment. One resident finished his online pastoral degree and is now working with a ministry helping others. Several have pursued jobs that support addiction recovery like being a leader in AA. Stories like these continue to happen because of BRH and the people that support them. The men are expected to create a sense of family within each home, live independently, buy groceries,

cook, and clean for themselves. Depending on each man's stage of recovery they may be in an out-patient program, working, or volunteering in the community. They become a support group to each other. These homes really bridge a gap between treatment and lifestyle, helping people to get back on their feet.

BRH team members are active daily with the men and are just a phone call away if ever needed – they help to keep the men focused and stable as well.

Operation Round Up® has supported all the Burlington Homes and they have been awarded two \$12,000 impact grants, one in 2019 and now this year's grant.

Participating cooperative members whose bills are rounded up to the nearest whole dollar make Operation Round Up® possible. The program was begun in 1996 and has provided over \$4.1 million in support to many health and welfare organizations and non-profits.

INSIDE

A Word From Your CEO	2
Election Results	3
Shred Event	4
Equipment Identified	4





A WORD FROM YOUR CEO

Summer Recap and a Look at How Power is Distributed >>>

Your cooperative is doing well. The pandemic gave us an opportunity to remodel our lobby this summer. Materials have been slow or hard to get, but we hope to open the doors later this fall. If members need to meet with staff, we have a temporary office trailer set up.

We're in the second half of August when this article is written, so up to that time, we've not had damaging storms. Because of that, our linemen and right of way crews that take care of brush and trees under and around power lines, have been able to get a lot of work done, in spite of the extreme heat.

Crews have been mostly building new services and underground construction. Underground work has been primarily replacing aging cable.

Power outages have been minimal. However, we experienced a transmission outage that affected roughly 2,000 Baxter area residents and businesses, including Crow Wing Power on Saturday, August 15. Thankfully, some of those businesses have generators.

When we posted the outage information on our Facebook page stating that there was a transmission issue, a couple of our members asked what does that mean?

Usually, when a sizable number of people in an area experience a sudden outage, a substation is out of power or the transmission line feeding a substation is damaged.

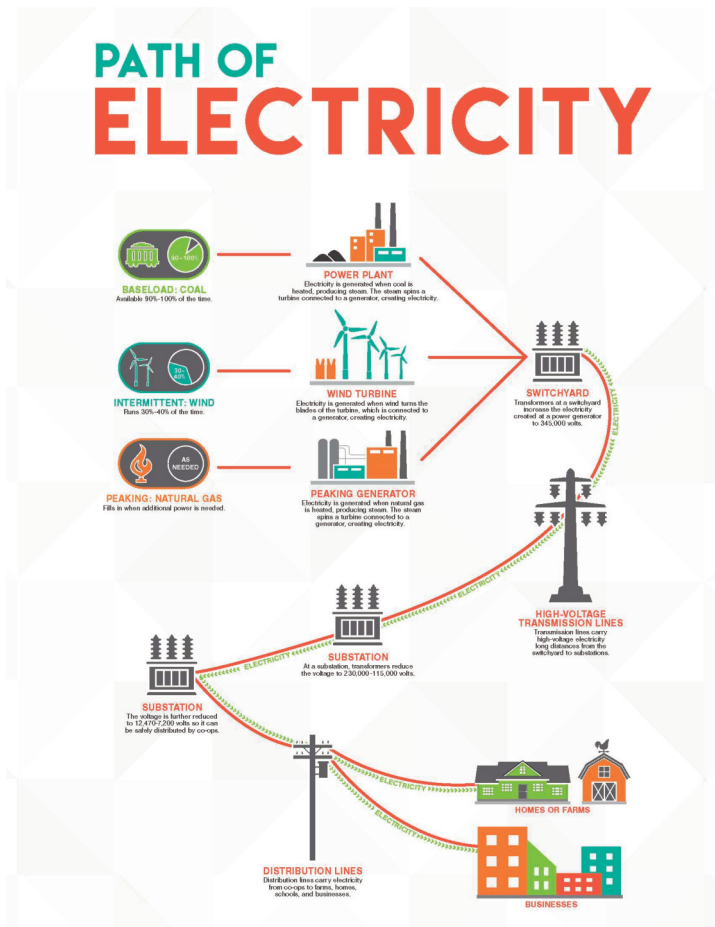
Typical transmission lines in this area are about 100 feet above the ground and are sets of wires that carry high voltage power from electric generating plants to substations. Substations have equipment to reduce the voltage to a useable level before it is distributed to homes and businesses.

Crow Wing Power is a distribution cooperative, meaning we own distribution power lines and substations. You will notice those power lines strung on 30 to 40 foot poles in your neighborhood.

Minnesota Power is a generation and transmission (G&T) company in the region that owns power plants and transmission lines. It was their transmission line that went out that afternoon, due to a contractor's equipment accidentally contacting the power line. Power sources were rerouted temporarily so the outage lasted about an hour and 15 minutes.

I'll keep you informed,

Bruce L. Kraemer, CEO



Board Meeting Highlights

Crow Wing Power's Board of Directors conducted its regular monthly meeting Thursday, July 15, 2021. A quorum of directors was present.

President Bob Kangas opened the meeting with the Pledge of Allegiance.

The following reports were given:

- CEO report
- Finance Committee report

The following actions were taken:

The Board approved:

- July Consent Agenda
- Minutes of the June 17, 2021 regular board meeting
- Approved allowing Directors to attend meetings virtually three times per year
- Director expense reports for June 2021

Members can review detailed minutes by logging into their SmartHub account. Log in is located on the homepage of our website. August minutes will be published after approval in September.



57% of Americans say that smart home technology products save them an average of 30 minutes per day.



Information collected from National Council for Home Safety and Security

Energy Efficiency Tip of the Month

Energy used for cooling and heating your home makes up the largest portion of your monthly energy bills.

By combining regular equipment maintenance and upgrades with recommended insulation, air sealing and thermostat settings, you can save about 30% on your energy bills while helping our environment.

Source: energy.gov



DID YOU KNOW?

Our body uses small pulses of electricity to keep the heart working with the right rhythm.

*DISCLAIMER: THESE ARE GOOGLED FINDS. ACCURACY IS NOT VERIFIED.

Board of Directors Election Results >>>

Approximately 100 cooperative members attended Crow Wing Power's 84th Annual Business Meeting on Wednesday, August 4. A total of 5,817 ballots were cast in this year's Board of Directors election.

- In District 1A, Robert (Bob) Kangas was re-elected with 3,001 votes over Fredrick Hage who tallied 2,773 votes.
- In District 2 At-Large, incumbent LuAnn Nelson received 2,960 votes and won the election over Giles Radtke's 2,836 votes.
- In District 3B, Richard (Ric) Larson ran unopposed and received 5,021 votes.

The 2021 Annual Business Meeting was not accompanied by a member appreciation event as it has in years past. The goal was to be able to conduct the annual meeting in person. Planning required flexibility due to potential COVID-19 guideline changes. Thank you to the members that attended the meeting and to those who voted in this year's election.

Send Us Your Best Scenic Photos

We are conducting another calendar contest. To enter the contest, please submit your scenic photos of Minnesota to us. If your photo is chosen for the 2022 calendar, you will receive a \$25 electric bill credit. We will have a spiral bound calendar produced and available in early December.

See our website at cwpower.com for guidelines and entry information. Deadline for submission(s) is October 1, 2021. To see last year's samples, go to our website at cwpower.com.



Notice of Rights for Households of Military Service Personnel >>>

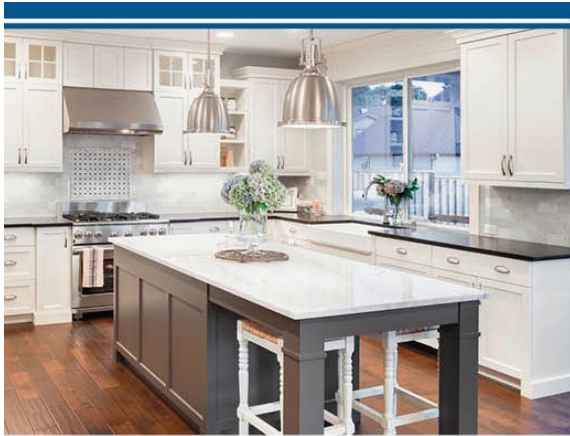
According to State Statute 325E.028 (<https://www.revisor.mn.gov/statutes/2019/cite/325E.028>), an electric cooperative cannot disconnect a residential customer for nonpayment of electric bills if a member of the household has been issued orders into active duty, for deployment or for a permanent change in duty station during the period of active duty, deployment or for a permanent change in duty station, if such a residential customer meets income criteria specified by law. To receive this protection from disconnection, the residential customer must request and reach agreement with the cooperative on a payment plan. You may contact the cooperative to receive the application form.

Verification of income is required unless the customer is automatically eligible for protection against disconnection as a recipient of any form of public assistance including energy assistance that uses income eligibility in an amount at or below the income eligibility.

The customer has the right to appeal when the utility and residential customer are unable to agree on the establishment, reasonableness or modification of a payment schedule, or timeliness of payments under a payment schedule.

If denied, an appeal must be made within seven working days after the utility has deposited first class mail notice. Service cannot be disconnected during an appeal.

For more information or to apply for shut-off protection, call 1-800-648-9401 or 218-829-2827.



Home Equity
 RATES AS LOW AS
2.50%

*Current CWPCU loans not eligible for these rates. All loans subject to credit approval. Other rates and terms available based on collateral and credit.



CAR LOAN
 RATES AS LOW AS
1.49%

IT'S A GREAT TIME TO UPGRADE YOUR VEHICLE!

1-800-648-9401 www.cwpcu.org

CROW WING POWER CREDIT UNION

Electrical Equipment Explained



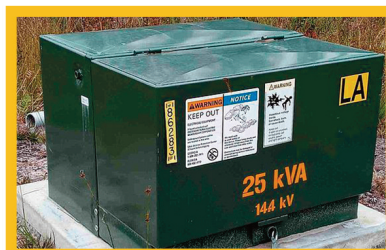
Transmission lines are high voltage wires that carry power long distances from power plants to distribution substations.

Substations convert the power system voltage from transmission levels to distribution levels so that it can be safely and efficiently delivered.



Distribution power lines carry power from substations to homes and businesses.

Pole Mounted Transformers are mounted on an electrical service pole. Pole mounted transformers are the common transformers used for converting voltage to the 120/240 volt power used by homes and low-volume commercial installations.



Padmount Transformers are used with underground electric power cables at service drops. A single transformer may serve one large building or many homes.



Credit Union Annual Shred Day October 19
 Crow Wing Power Credit Union is once again offering a free document shredding day. Paper Storm will have their truck at Crow Wing Power headquarters on Highway 371 on Tuesday, October 19 from 10 to noon.

Take advantage of this free secure offer.

CURRENT CONNECTION

A Touchstone Energy® Cooperative 
 The power of human connections

Published monthly by
 Crow Wing Power,
 17330 State Hwy. 371
 Brainerd, MN 56401.
 218-829-2827
 800-648-9401
www.cwpcu.org

Editor: Char Kinzer

Board meetings are held the third Thursday of each month beginning at 9:30 a.m.